



Week 1 & Week 2 Forecast for the Philippines using GEFS Model



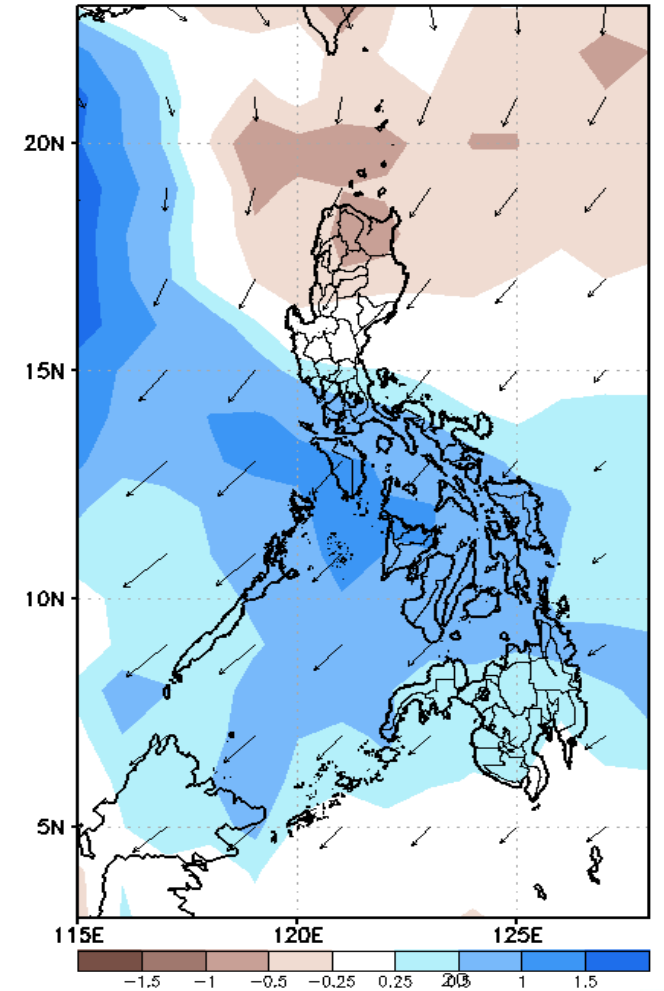
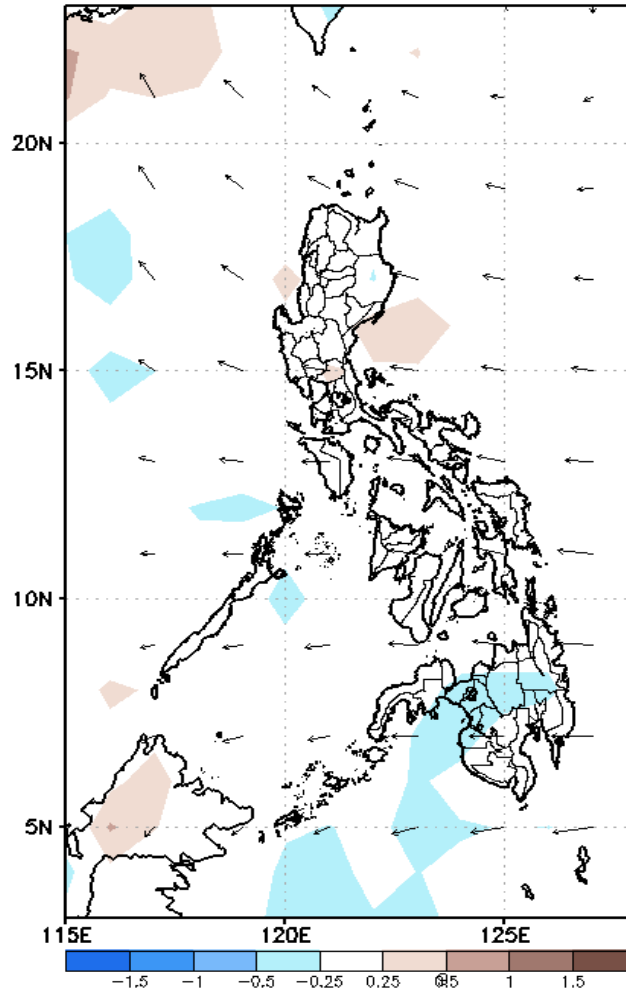
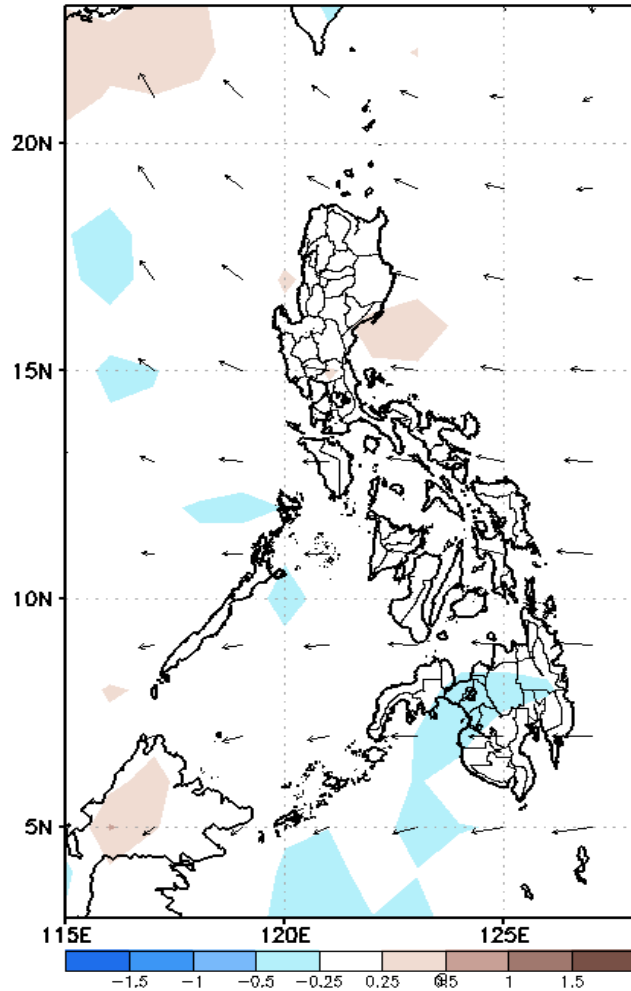
GEFS Week-1 Forecasts: Divergence & Wind Anomaly

Week 1: Sep 17-23, 2020

GEFS Week-1 850-hPa Divergence and Wind Anom
Valid: 20200917 - 20200923

GEFS Week-1 700-hPa Divergence and Wind Anom
Valid: 20200917 - 20200923

GEFS Week-1 200-hPa Divergence and Wind Anom
Valid: 20200917 - 20200923



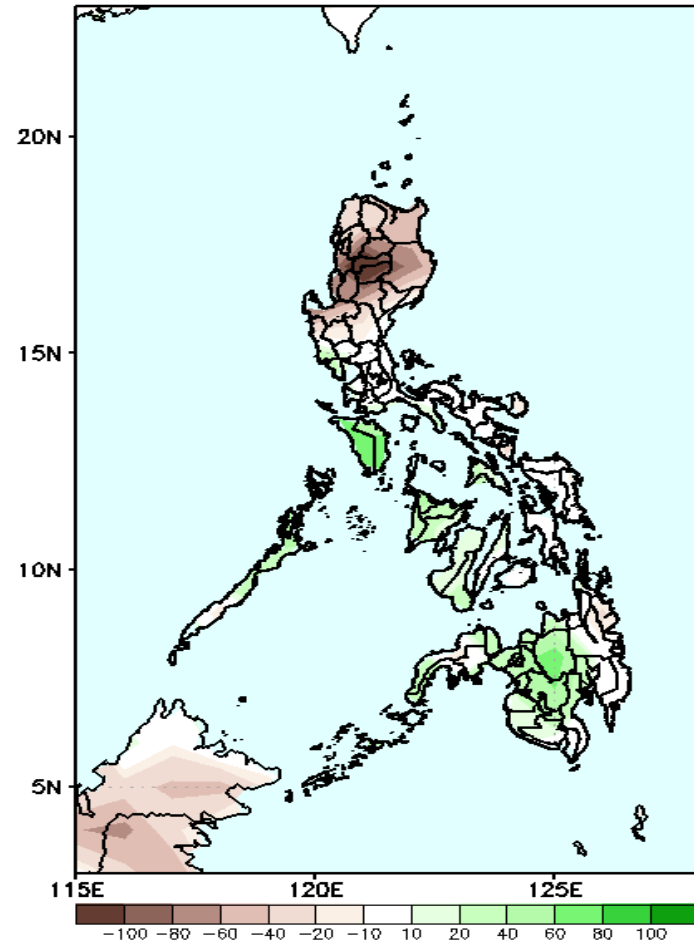
Upper level (200hPa) Divergence suggest likelihood of precipitation in parts of central Luzon, NCR, CALABARZON, MIMAROPA, southern Luzon, Visayas and Mindanao. Southwest Monsoon affecting western sections of the country while easterlies affecting the remaining parts of the country during the forecast period.



Precipitation Anomaly and Exceedance Probability > 25/50 mm

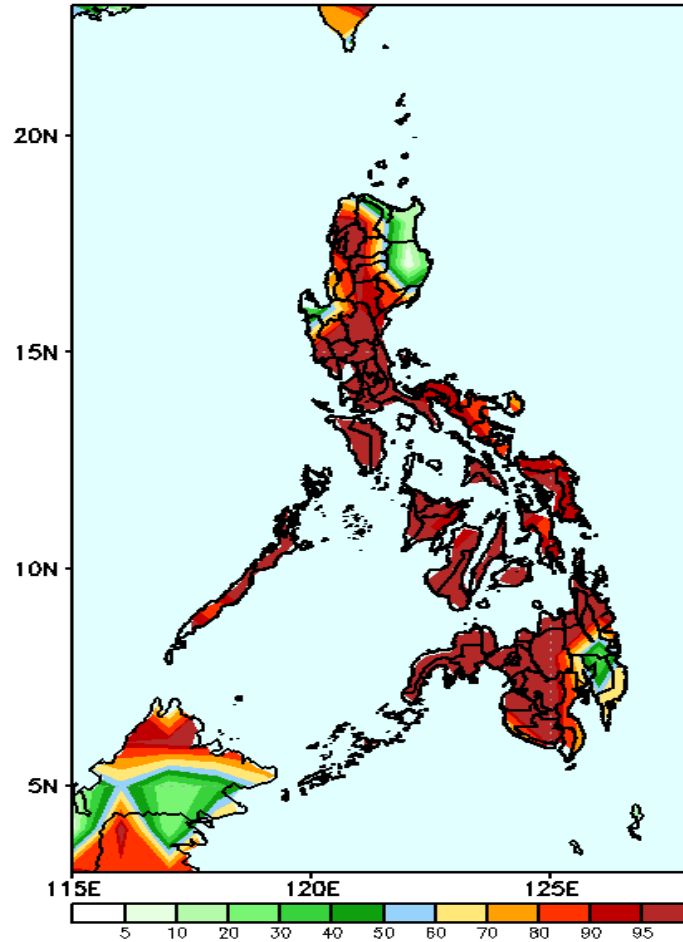
Week 1: Sep 17-23, 2020

GEFS Week-1 Precip Anomaly
Valid: 20200917 - 20200923



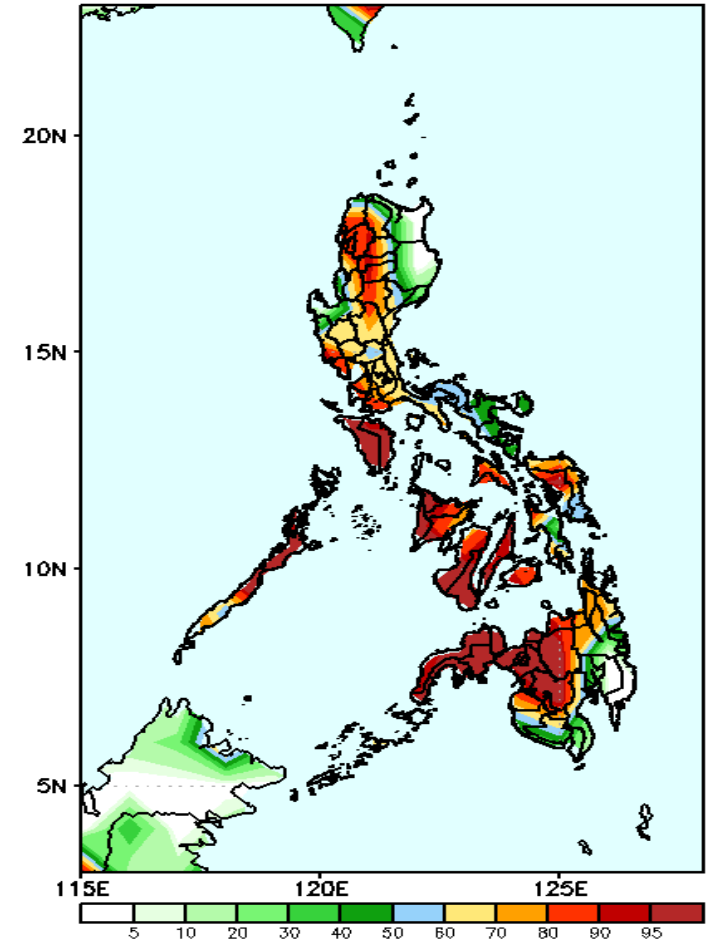
Rainfall deficit of 50-100mm in most parts of Luzon is expected while increase of rainfall of up to 50mm in Mindoro, Bukidnon and North Cotabato during the forecast period.

GEFS Week-1 Exceedance Prob. > 25mm
Valid: 20200917 - 20200923



High probability of rainfall to exceed 25mm in most parts the country is expected except in Cagayan & Isabela during the forecast period.

GEFS Week-1 Exceedance Prob. > 50mm
Valid: 20200917 - 20200923

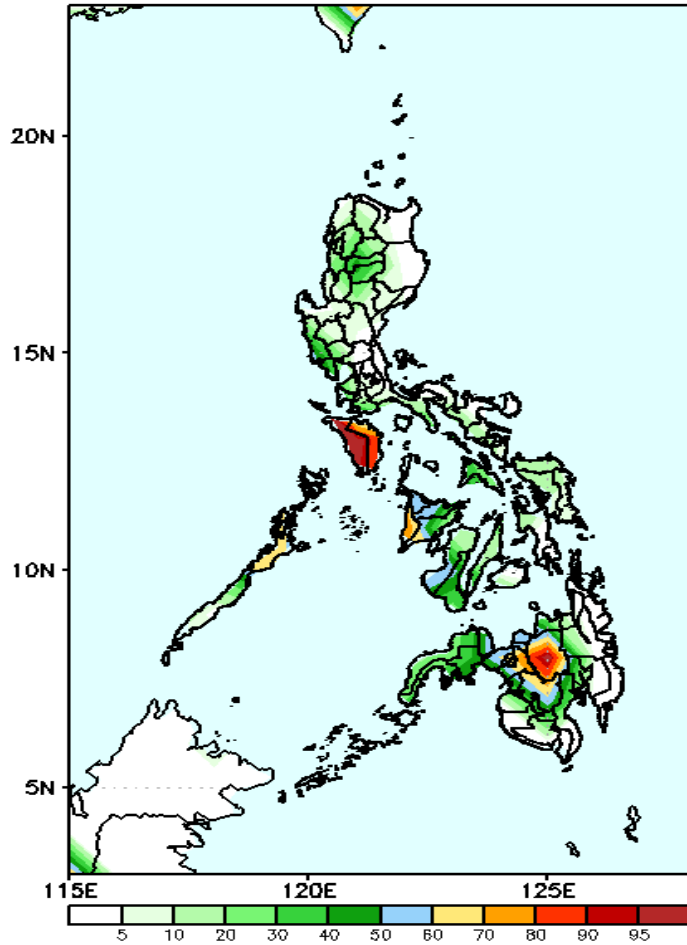


High probability of rainfall to exceed 50mm in most parts of the country except in Cagayan, Isabela, Bicol Region, Sarangani and Davao Region during the forecast period.

Exceedance Probability > 100/150/200 mm

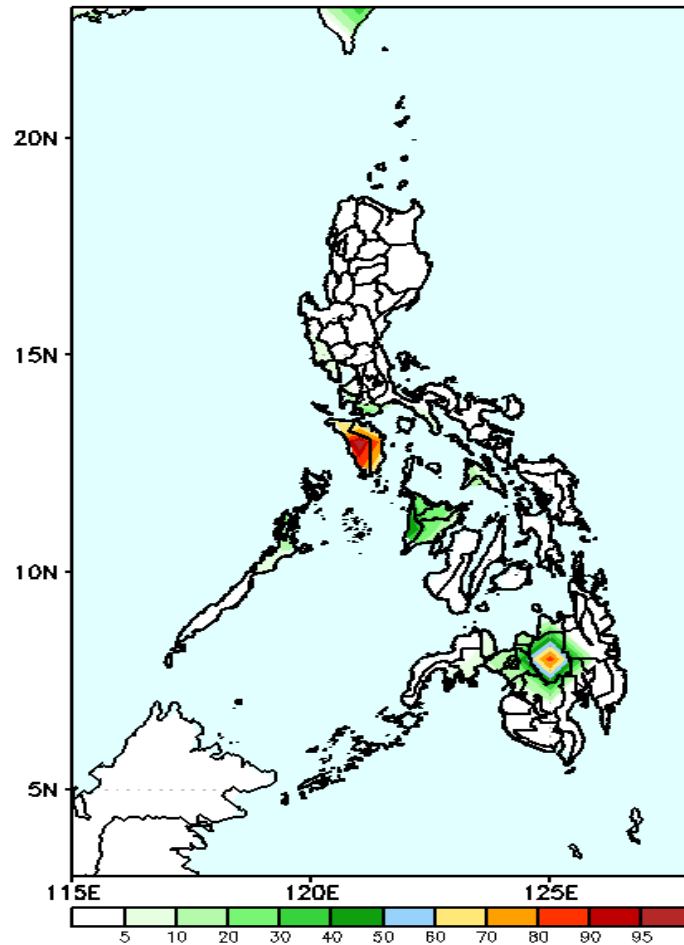
Week 1: Sep 17-23, 2020

GEFS Week-1 Exceedance Prob. > 100mm
Valid: 20200917 - 20200923



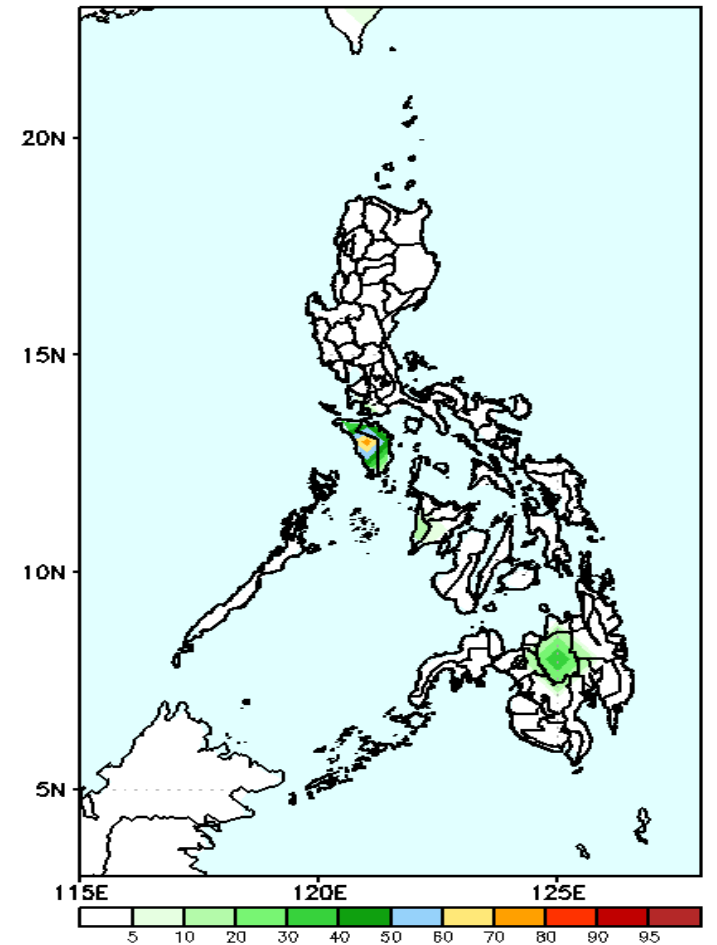
High probability of rainfall to exceed 100mm in Mindoro & Bukidnon is expected while less likely for the rest of the country during the forecast period.

GEFS Week-1 Exceedance Prob. > 150mm
Valid: 20200917 - 20200923



60-95% probability of rainfall to exceed 150mm in Mindoro & Bukidnon is expected while less likely for the rest of the country during the forecast period.

GEFS Week-1 Exceedance Prob. > 200mm
Valid: 20200917 - 20200923



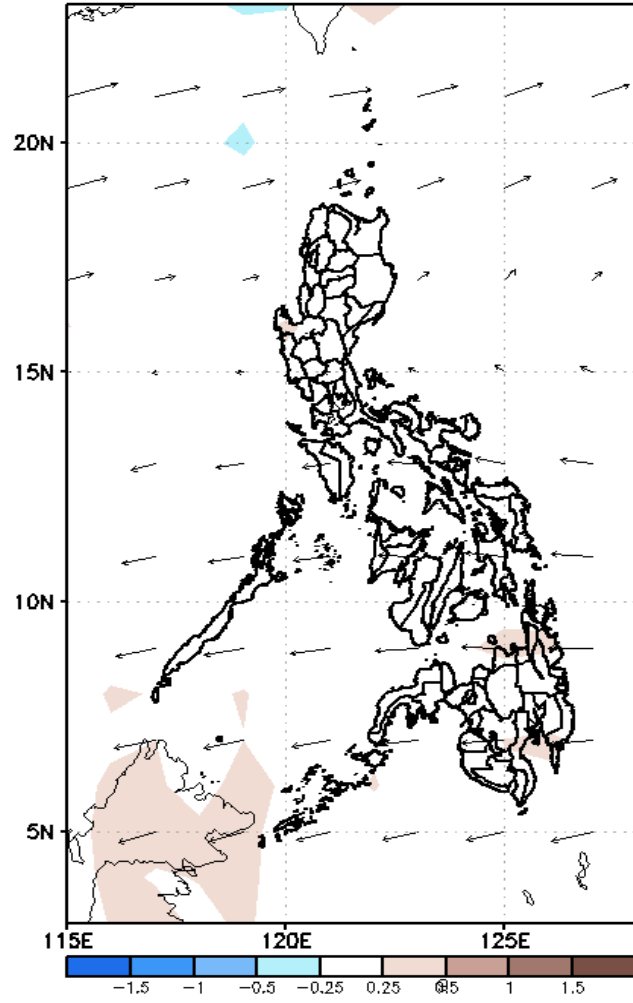
Less probability of rainfall to exceed 200mm in most parts of the country during the forecast period.



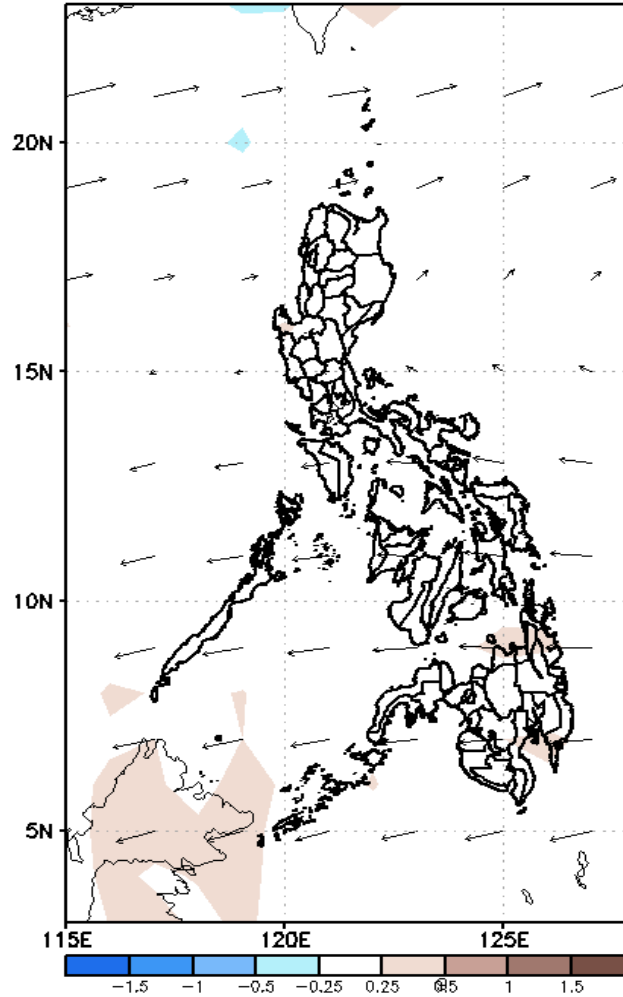
GEFS Week-2 Forecasts: Divergence & Wind Anomaly

Week 2: Sep 24-30, 2020

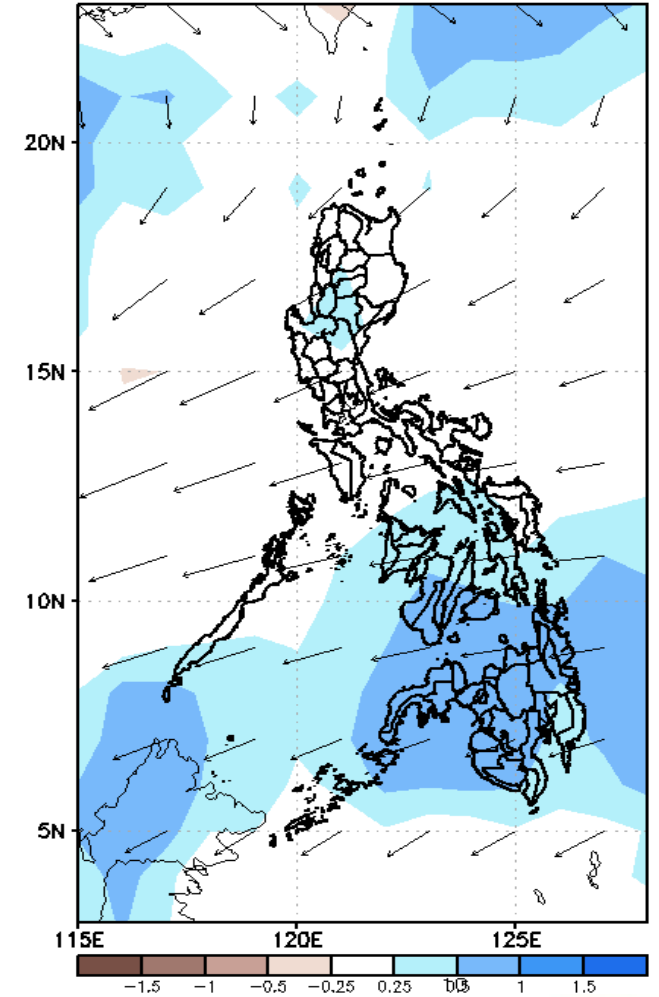
GEFS Week-2 850-hPa Divergence and Wind Anom
Valid: 20200924 - 20200930



GEFS Week-2 700-hPa Divergence and Wind Anom
Valid: 20200924 - 20200930



GEFS week-2 200-hPa Divergence and Wind Anom
Valid: 20200924 - 20200930

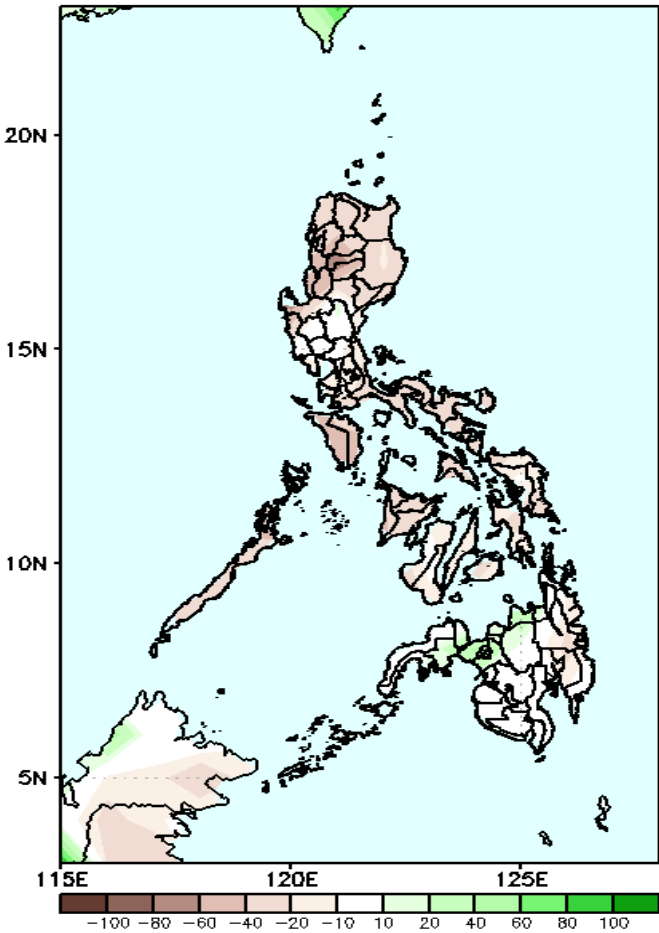


Upper level (200hPa) Divergence suggest likelihood of precipitation in parts of Cordillera region and most parts of Visayas and Mindanao. Easterlies affecting most parts of the country during the forecast period.

Precipitation Anomaly and Exceedance Probability > 25/50 mm

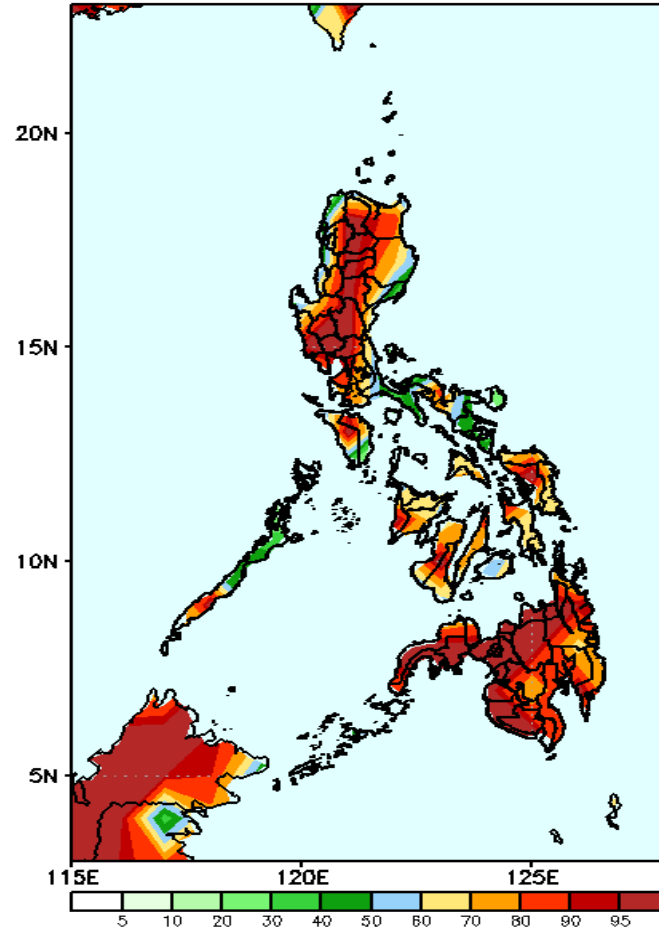
Week 2: Sep 24-30, 2020

GEFS Week-2 Precip Anomaly
Valid: 20200924 - 20200930



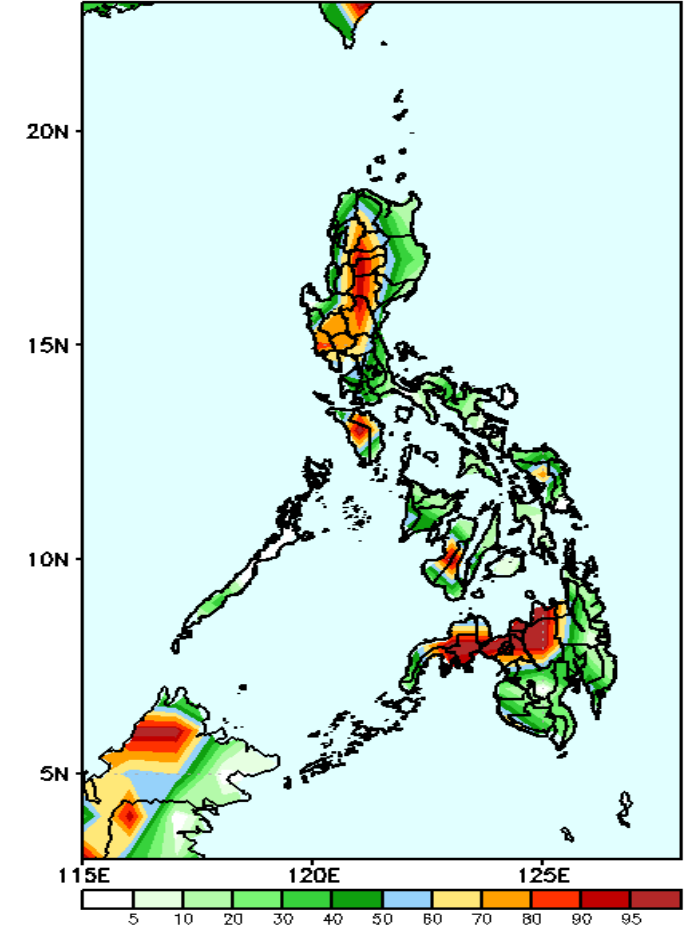
Rainfall deficit of 40-60mm in most parts of northern half of Luzon and Visayas is expected during the forecast period.

GEFS Week-2 Exceedance Prob. > 25mm
Valid: 20200924 - 20200930



High probability of rainfall to exceed 25mm in most parts of the country is expected during the forecast period.

GEFS Week-2 Exceedance Prob. > 50mm
Valid: 20200924 - 20200930

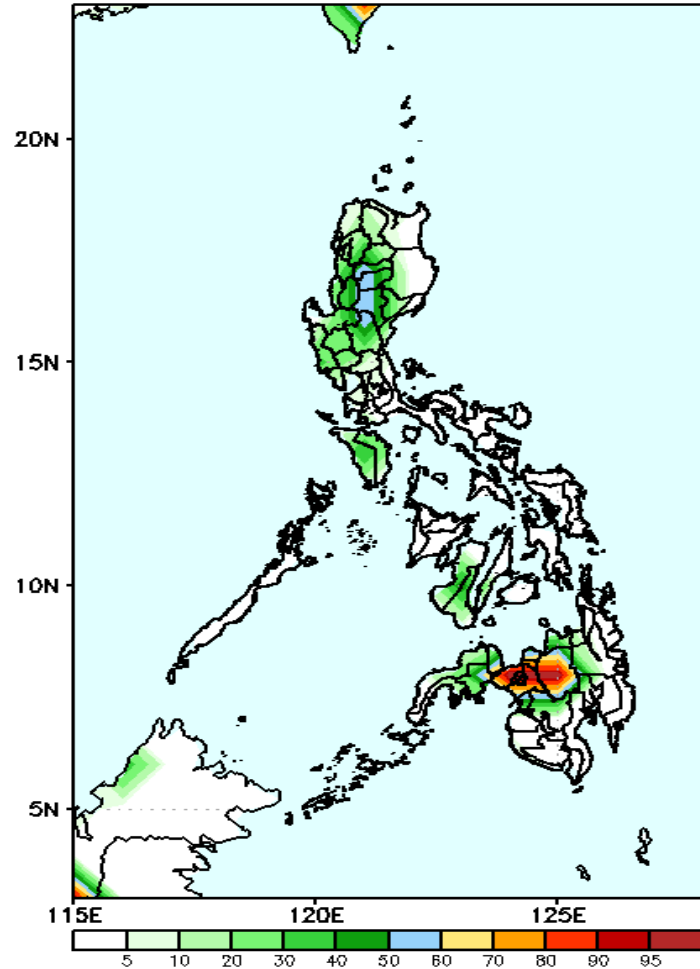


High probability of rainfall to exceed 50mm in most parts of western, Mindoro and northwestern parts of Mindanao is expected while less likely for the rest of the country during the forecast period.

Exceedance Probability > 100/150/200 mm

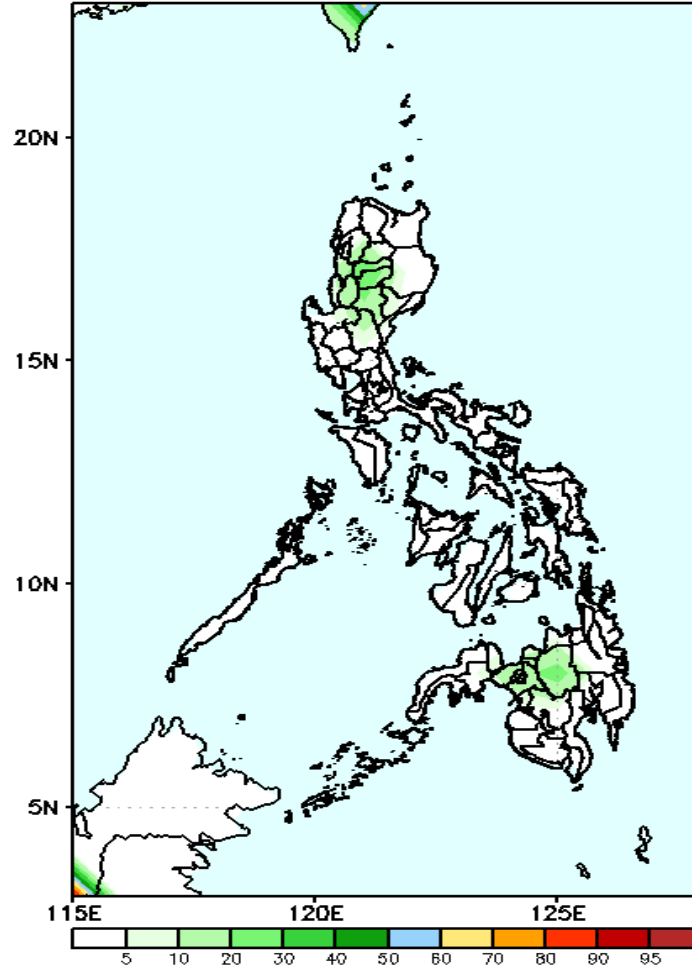
Week 2: Sep 24-30, 2020

GEFS Week-2 Exceedance Prob. > 100mm
Valid: 20200924 - 20200930



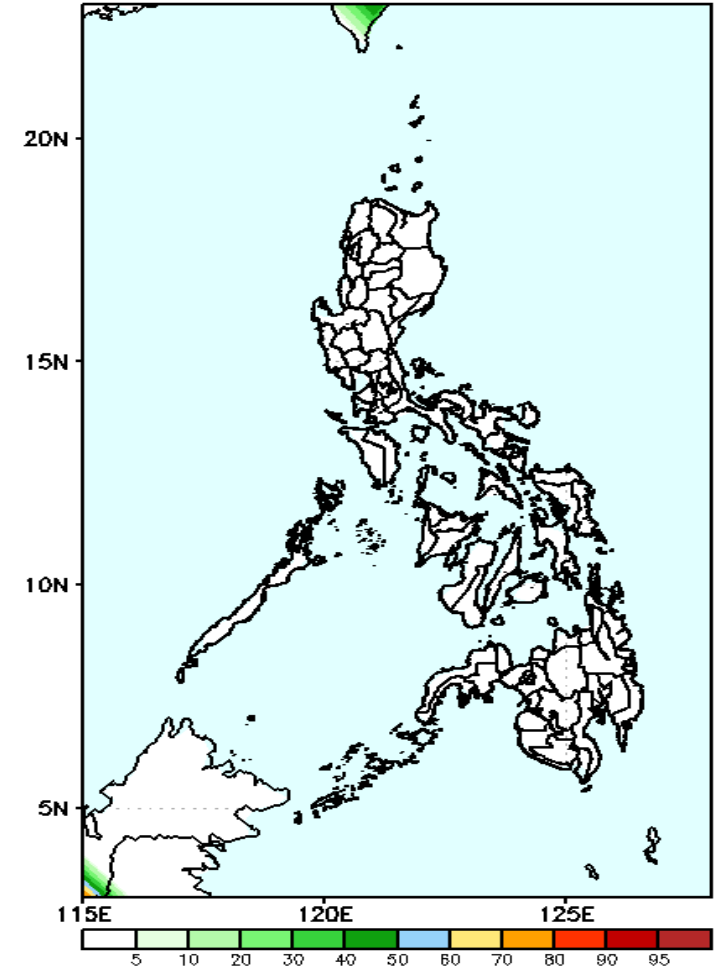
High probability of rainfall to exceed 100mm in Bukidnon and Lanao provinces while less likely for the rest of the country during the forecast period.

GEFS Week-2 Exceedance Prob. > 150mm
Valid: 20200924 - 20200930



Less probability of rainfall to exceed 150mm in most parts of the country during the forecast period.

GEFS Week-2 Exceedance Prob. > 200mm
Valid: 20200924 - 20200930

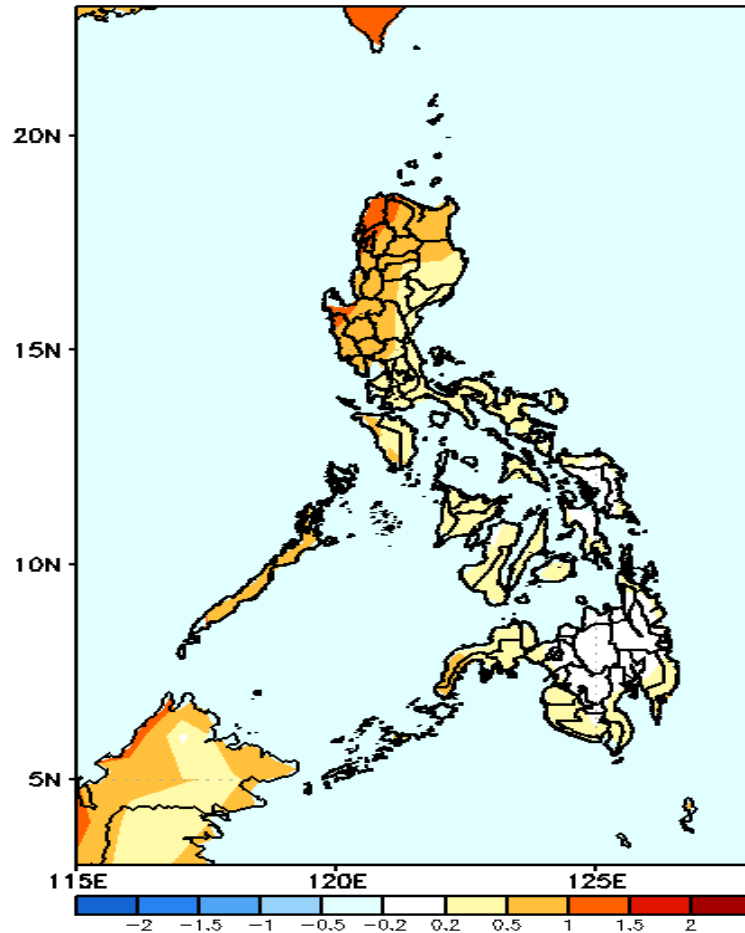


Less probability of rainfall to exceed 200mm in most parts of the country during the forecast period.



GEFS Week-1 & 2 Forecasts: T2m Anomaly

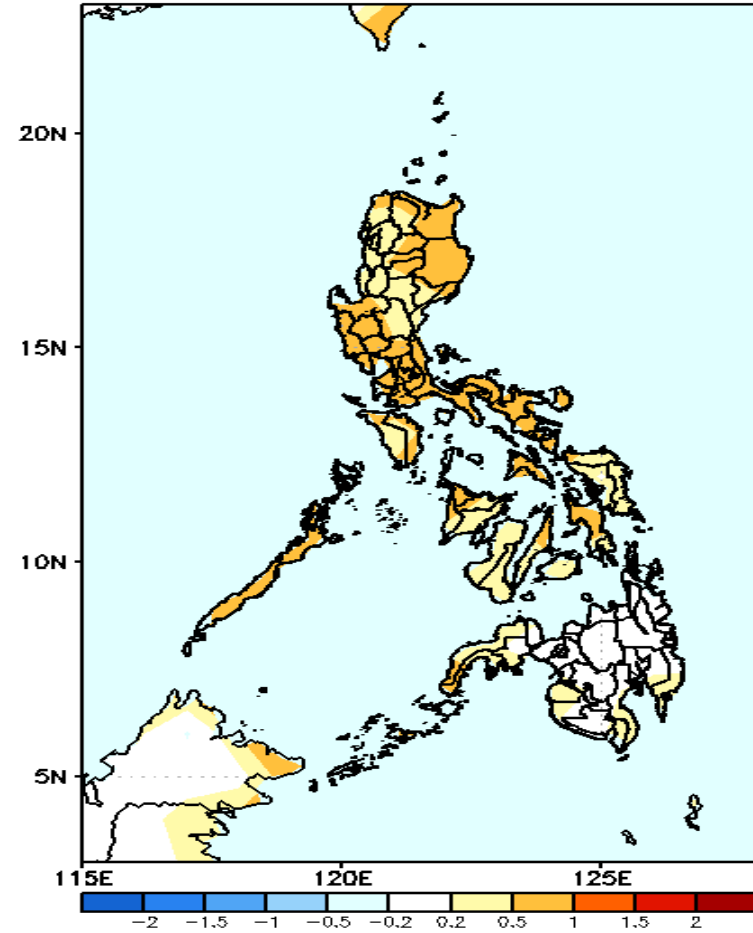
GEFS Week-1 T2m Anomaly
Valid: 20200917 - 20200923



2m Temperature Week 1: Sep 17-23, 2020

Slightly warmer surface air temperature will likely experience in most parts of Luzon while average surface air temperature for the rest of the country during the forecast period.

GEFS Week-2 T2m Anomaly
Valid: 20200924 - 20200930



2m Temperature Week 2: Sep 24-30, 2020

Slightly warmer than average surface air temperature will likely experience in most parts of the country during the forecast period.